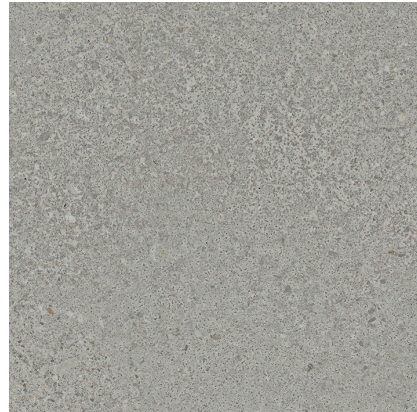


Model: LOFT GREY 120X120(A)

Codes: 100320135

Water absorption: Bla - Porcelánico (E<=0.1%)



DIMENSIONAL FEATURES

 UNE-EN ISO 10545-2

Thickness	11.5 MM	+/-5%*
Width	1200 MM	
Length	1200 MM	
Length and width deviation	Below 0.15%	+/-0.3%*
Side straightness deviation	Below 0.15%	+/-0.3%*
Squareness deviation	Below 0.15%	+/-0.3%*
Surface flatness deviation	Below 0.15%	+/-0.4%*

*ISO-13006:2018 UNE-EN 14411:2016

MECHANICAL FEATURES

 UNE-EN ISO 10545-4-6-7-11

Breaking strength	3065.3 N	>1300N*
Modulus of rupture	37.32 N/MM2	>=35N/mm2*
Crazing resistance	Resists 3 cycles	

*ISO-13006:2018 UNE-EN 14411:2016

HYGIENIC FEATURES

 UNE-EN ISO 10545-13-14:1995

Chemical resistance	Class "A" for swimming pools and cleaning products (resists attack). Minimum Class "B" for acids and bases	B Min.*
Stain resistance	Class 5. Easy cleaning with water	3 Min.*

*ISO-13006:2018 UNE-EN 14411:2016

SCOPE OF USE

Technical code-1	Use on heavy traffic floors	
------------------	-----------------------------	--

ANTI-SLIP VALUE

 EN 16165: 2022 / ASTM C1028

Slip resistance (pendulum-wet)	CL1	
--------------------------------	-----	--

*ISO-13006:2018 UNE-EN 14411:2016

PACKING

Sales units per box	1.440092 M2/BOX	
Sales units per pallet	54.723502 M2/PAL	
Sales units per unit	1.440092 M2/PIECE	

System Certification

